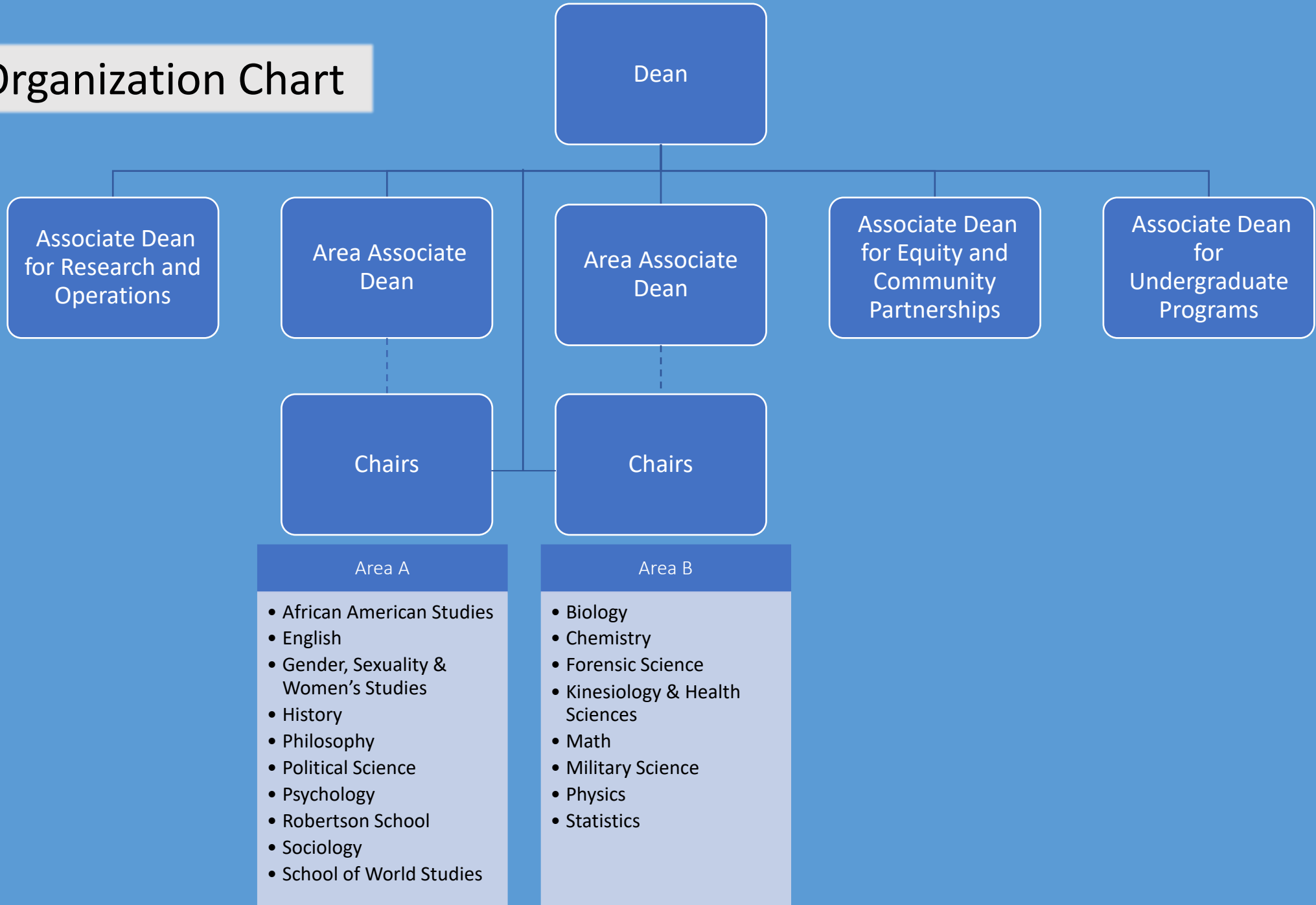


Organization Chart



Areas of Responsibility

Collaborate

AD for Research & Operations

- Connect College to University discussions related to research & graduate affairs
- Professional development programming related to research and graduate students
- Responsible for sponsored programs, IT, space
- Support Area ADs when needed on major issues (e.g., investigations)

Area ADs

- Day-to-day issues in academic units
- Support new directions (e.g., curriculum, programs)
- Handle faculty affairs for their departments
- Together, faculty professional development

AD for Equity & Community Partnerships

- Develop strategy and plan for improved equity and inclusion in College
- Programming related to equity and inclusion
- Implement strategy with other ADs and Dean
- Develop strategy to amplify and expand community-partnered research and teaching in the College

AD for Undergraduate Programs

- Responsible for student success strategy
- Oversee advising and recruitment staff
- Represent College in University discussions related to undergrad issues
- Support Area ADs in curriculum and program development